



Compressor
Voltage Code : FZ

AJ2464P-FZ

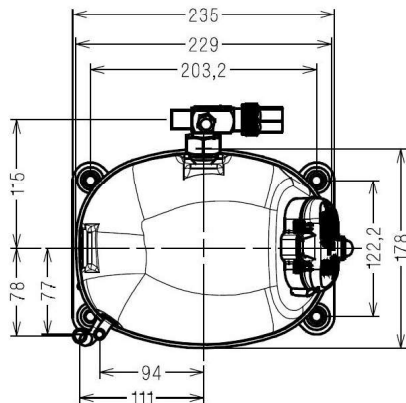
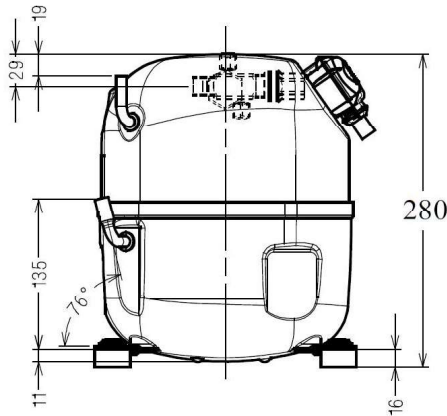
Low Temp. Commercial (BP)

220 - 240V 1~ 50 Hz

R404A / R455A / R454C

AJ2464P-FZ3A

Conditions	Frequency	Nominal Cooling Capacity		Sound Power ISO3745 / ISO 3743-1
		Watts	BTU/h	
ASHRAE / R404A	50 Hz	1576	5374	61 dBA
ASHRAE / R455A	50 Hz	1177	4012	61 dBA
ASHRAE / R454C	50 Hz	1135	3871	61 dBA



* ASHRAE : T°Cond. 54.4°C / T°Evap. -23.3°C / T°Return gas temp.. 32.2°C
T°Subcooling. 16.4K

Certificates :



Displacement (cc)	34,5
Net Weight (Kg)	21.2
Oil Quantity (cc)	475.0
Oil Type	Polyolester
Expansion Device	Capillary_Tube/Expansion_Valve
Cooling	Fan
Main Winding (Ohm)	1.6
Start Winding (Ohm)	6.5
Current	
RLA (A)	5,9
MCC (A)	10
LRA (A)	40
Electrical Equipment	CSR
Overload	MSTF16AFZ
Time Check	2.8s - 5.2s / 38 A
Open Temp	120° C
Close Temp	61° C
Optional	T0636
Start Capacitor	88 µF / 330 V
Run Capacitor	20 µF / 400 V
Potential Relay	RVA6M**
Pick Up	239/268V
Drop Out	60/135V
Refrigerating connection for	
Suction Tube	15.9 (5/8")
Discharge Tube	7.9 (5/16")
Process Tube	6.35 (1/4")

Note : Tecumseh reserves the right to change information contained in this document without notification.



Tecumseh

AJ2464P-FZ	Tension FZ : 220 - 240V 1~ 50 Hz
-------------------	---

Les performances sont données dans les conditions ASHRAE :	Gaz aspirés :	32.2 °C
Condition Dew	Sous refroidissement :	22.0 K
The performance data are in ASHRAE conditions :	Return gas :	32.2 °C
Dew Condition	Subcooling :	22.0 K

© 2024 Tecumseh Products Company
All rights reserved

50 Hz R404A

N°3609

4 T condensation	5 T évaporation	(°C)	-40	-35	-30	-25	-20	-15	-10
30	1 P frigorifique	(Watt)	780	1063	1407	1818	2302	2866	3517
	2 P absorbée	(W)	723	835	948	1061	1176	1293	1411
	3 I absorbée	(A)	4.13	4.50	4.91	5.37	5.87	6.43	7.03
40	1 P frigorifique	(Watt)		952	1284	1680	2148	2695	3329
	2 P absorbée	(W)		845	979	1116	1257	1401	1550
	3 I absorbée	(A)		4.55	5.06	5.62	6.22	6.88	7.58
50	1 P frigorifique	(Watt)			1141	1520	1969	2498	3116
	2 P absorbée	(W)			988	1149	1315	1487	1666
	3 I absorbée	(A)			5.15	5.81	6.51	7.27	8.07
60	1 P frigorifique	(Watt)				1339	1770	2284	2892
	2 P absorbée	(W)				1162	1354	1554	1763
	3 I absorbée	(A)				5.94	6.74	7.60	8.50

50 Hz R455A

N°3320

4 T condensation	5 T évaporation	(°C)	-40	-35	-30	-25	-20	-15	-10
30	1 P frigorifique	(Watt)	568	822	1134	1512	1963	2494	3115
	2 P absorbée	(W)	539	642	746	850	955	1058	1159
	3 I absorbée	(A)	2.89	3.34	3.79	4.25	4.72	5.21	5.72
40	1 P frigorifique	(Watt)	461	710	1013	1378	1814	2330	2934
	2 P absorbée	(W)	520	638	760	886	1014	1145	1276
	3 I absorbée	(A)	2.82	3.33	3.85	4.40	4.96	5.55	6.18
50	1 P frigorifique	(Watt)		577	867	1217	1635	2132	2717
	2 P absorbée	(W)		613	752	897	1048	1205	1365
	3 I absorbée	(A)		3.22	3.83	4.47	5.14	5.84	6.59
60	1 P frigorifique	(Watt)			700	1030	1426	1900	2463
	2 P absorbée	(W)			723	887	1059	1239	1427
	3 I absorbée	(A)			3.67	4.41	5.20	6.03	6.91

1 = cooling capacity 2 = power input 3 = current 4 = condensing temperature 5 = evaporating temperature

Nota : Tecumseh se réserve le droit de modifier les informations contenues dans ce document sans préavis.

Note : Tecumseh reserves the right to change information contained in this document without notification.



Tecumseh

AJ2464P-FZ	Tension FZ : 220 - 240V 1~ 50 Hz
-------------------	---

Les performances sont données dans les conditions ASHRAE :	Gaz aspirés :	32.2 °C
Condition Dew	Sous refroidissement :	16.4 K
The performance data are in ASHRAE conditions :	Return gas :	32.2 °C
Dew Condition	Subcooling :	16.4 K

50 Hz R454C

N°3319

4 T condensation	5 T évaporation	(°C)	-40	-35	-30	-25	-20	-15	-10
30	1 P frigorifique	(Watt)	509	744	1031	1376	1787	2270	2832
	2 P absorbée	(W)	519	616	712	808	905	1002	1100
	3 I absorbée	(A)	2.87	3.27	3.69	4.12	4.57	5.04	5.51
40	1 P frigorifique	(Watt)	421	655	936	1274	1675	2147	2698
	2 P absorbée	(W)	502	615	729	845	963	1085	1209
	3 I absorbée	(A)	2.81	3.26	3.75	4.25	4.79	5.34	5.92
50	1 P frigorifique	(Watt)		544	817	1142	1529	1986	2522
	2 P absorbée	(W)		596	726	860	1000	1144	1294
	3 I absorbée	(A)		3.20	3.75	4.34	4.96	5.61	6.30
60	1 P frigorifique	(Watt)			677	984	1352	1789	2306
	2 P absorbée	(W)			705	856	1015	1181	1355
	3 I absorbée	(A)			3.64	4.31	5.03	5.78	6.58

© 2024 Tecumseh Products Company
All rights reserved

1 = cooling capacity 2 = power input 3 = current 4 = condensing temperature 5 = evaporating temperature

Nota : Tecumseh se réserve le droit de modifier les informations contenues dans ce document sans préavis.
Note : Tecumseh reserves the right to change information contained in this document without notification.