



Compressor  
Voltage Code : FZ

THB4410YFZ

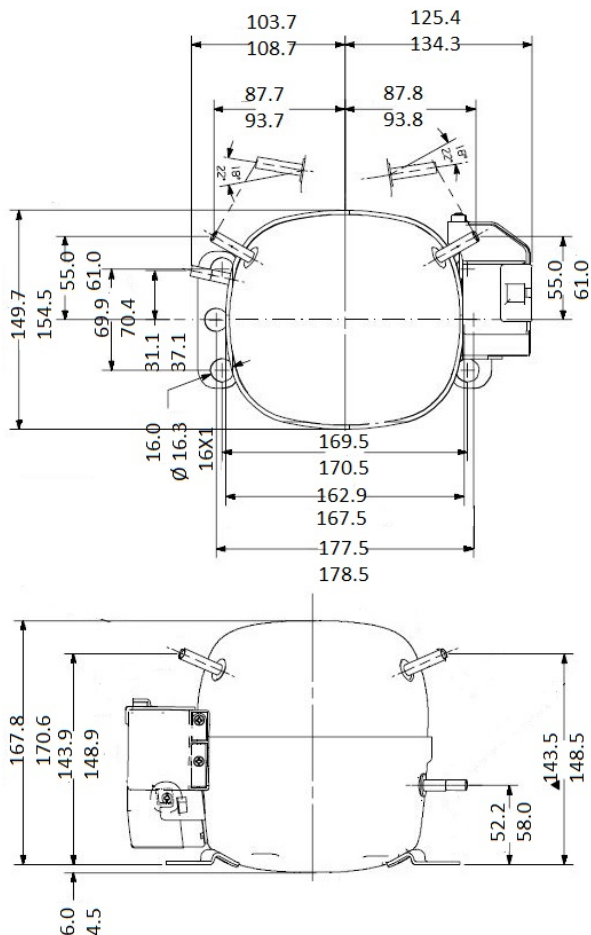
High Temp. Commercial (HP)

220 - 240V 1~ 50 Hz

R134a / R513A

THB4410YFZ

Conditions	Frequency	Nominal Cooling Capacity		Sound Power ISO3745 / ISO 3743-1
		Watts	BTU/h	
EN12900 / R134a	50 Hz	226	772	41 dBA
EN12900 / R513A	50 Hz	230	786	41 dBA



\* EN12900 : T°Cond. 50.0°C / T°Evap. 5.0°C / T°Return gas temp.. 20.0°C  
T°Subcooling. 0.0K

Certificates :



<b>Displacement (cc)</b>	2.73
<b>Net Weight (Kg)</b>	7.4
<b>Oil Quantity (cc)</b>	250.0
<b>Oil Type</b>	Polyolester
<b>Expansion Device</b>	Capillary_Tube/Expansion_Valve
<b>Cooling</b>	Static
<b>Main Winding (Ohm)</b>	29.5
<b>Start Winding (Ohm)</b>	32.4
<b>Current</b>	
RLA (A)	0.8
MCC (A)	0.9
LRA (A)	5
<b>Electrical Equipment</b>	CSIR
<b>Overload</b>	T7927
Time Check	6.5s - 16s / 3.5 A
Open Temp	120° C
Close Temp	61° C
<b>Start Capacitor</b>	47-56 µF / 250 V
<b>Current Relay</b>	9660C-***-095
Pick Up	1.98A
Drop Out	1.69A
Optional	RP20**
<b>Refrigerating connection for OD</b>	
Suction Tube	6.35 (1/4")
Discharge Tube	6.35 (1/4")
Process Tube	4.76 (3/16")

Note : Tecumseh reserves the right to change information contained in this document without notification.



**Tecumseh**

<b>THB4410YFZ</b>	<b>Tension FZ : 220 - 240V 1~ 50 Hz</b>
-------------------	---

Les performances sont données dans les **conditions EN12900** :  
 Condition Dew  
 The performance data are in **EN12900 conditions** :  
 Dew Condition

Gaz aspirés : 20.0 °C  
 Sous refroidissement : 0.0 K  
 Return gas : 20.0 °C  
 Subcooling : 0.0 K

<b>50 Hz R134a</b>											
<b>N°211CE-FZ</b>											
4   T condensation	5   T évaporation	(°C)	-25	-20	-15	-10	-5	0	5	10	15
<b>30</b>	1   P frigorifique	(Watt)	69.1	92.4	121	156	198	248	306	375	454
	2   P absorbée	(W)	61.9	67.0	72.0	76.6	80.5	83.5	85.3	85.7	84.3
	3   I absorbée	(A)	0.57	0.60	0.62	0.64	0.64	0.65	0.65	0.64	0.62
<b>40</b>	1   P frigorifique	(Watt)	57.0	78.1	104	134	171	215	267	327	398
	2   P absorbée	(W)	63.2	69.1	75.3	81.5	87.5	92.9	97.6	101	104
	3   I absorbée	(A)	0.59	0.62	0.64	0.66	0.67	0.68	0.68	0.67	0.66
<b>50</b>	1   P frigorifique	(Watt)		63.8	86.0	112	144	182	226	279	340
	2   P absorbée	(W)		71.3	78.4	85.9	93.5	101	108	115	121
	3   I absorbée	(A)		0.65	0.67	0.69	0.71	0.71	0.71	0.71	0.70
<b>60</b>	1   P frigorifique	(Watt)			69.1	91.3	118	149	187	231	283
	2   P absorbée	(W)			82.3	90.7	99.8	109	119	128	137
	3   I absorbée	(A)			0.71	0.73	0.74	0.75	0.75	0.75	0.74

<b>50 Hz R513A</b>											
<b>N°3186</b>											
4   T condensation	5   T évaporation	(°C)	-25	-20	-15	-10	-5	0	5	10	15
<b>30</b>	1   P frigorifique	(Watt)	79.6	105	134	169	211	259	315	379	451
	2   P absorbée	(W)	68.8	73.5	77.9	82.1	85.8	89.1	91.8	93.9	95.2
	3   I absorbée	(A)	0.63	0.65	0.67	0.68	0.69	0.69	0.69	0.70	0.70
<b>40</b>	1   P frigorifique	(Watt)	64.2	86.4	113	144	181	224	274	332	398
	2   P absorbée	(W)	69.2	75.0	81.0	86.8	92.5	98.0	103	108	112
	3   I absorbée	(A)	0.65	0.67	0.69	0.71	0.71	0.72	0.72	0.71	0.71
<b>50</b>	1   P frigorifique	(Watt)		69.4	91.7	118	150	187	230	281	339
	2   P absorbée	(W)		76.2	83.5	90.9	98.5	106	114	121	128
	3   I absorbée	(A)		0.69	0.72	0.73	0.74	0.75	0.75	0.74	0.74
<b>60</b>	1   P frigorifique	(Watt)			72.9	94.0	119	150	186	228	278
	2   P absorbée	(W)			86.4	95.3	105	114	124	134	143
	3   I absorbée	(A)			0.74	0.76	0.78	0.79	0.79	0.78	0.78

1 = cooling capacity 2 = power input 3 = current 4 = condensing temperature 5 = evaporating temperature

**Nota : Tecumseh se réserve le droit de modifier les informations contenues dans ce document sans préavis.**

**Note : Tecumseh reserves the right to change information contained in this document without notification.**

© 2020 Tecumseh Products Company  
All rights reserved