

Compressor  
Voltage Code : FZ

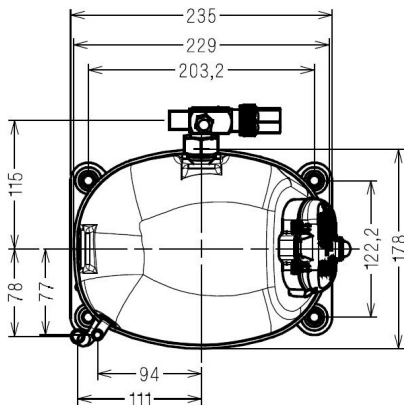
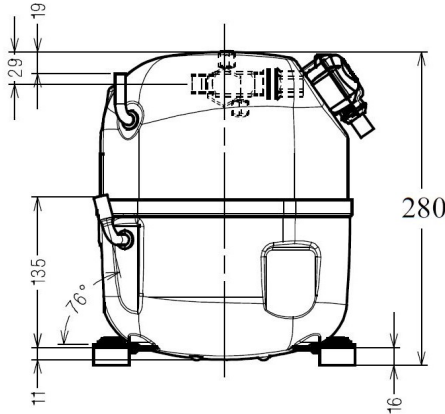
# AJ4513P-FZ

High Temp. Commercial (HP)

220 - 240V 1~ 50 Hz

R452A / R404A / R448A / R449A / R455A / R454C AJ4513P-FZ3A

Conditions	Frequency	Nominal Cooling Capacity		Sound Power ISO3745 / ISO 3743-1
		Watts	BTU/h	
EN12900_HP / R452A	50 Hz	3064	10449	64 dBA
EN12900_HP / R404A	50 Hz	3032	10339	64 dBA
EN12900_HP / R448A	50 Hz	3144	10721	64 dBA
EN12900_HP / R449A	50 Hz	3138	10701	64 dBA
EN12900_HP / R455A	50 Hz	3094	10549	64 dBA
EN12900_HP / R454C	50 Hz	2743	9355	64 dBA



<b>Displacement (cc)</b>	24,2
<b>Net Weight (Kg)</b>	21.4
<b>Oil Quantity (cc)</b>	475.0
<b>Oil Type</b>	Polyolester
<b>Expansion Device</b>	Capillary_Tube/Expansion_Valve
<b>Cooling</b>	Fan
<b>Main Winding (Ohm)</b>	2.7
<b>Start Winding (Ohm)</b>	7.9
<b>Current</b>	
RLA (A)	6,8
MCC (A)	11,3
LRA (A)	33
<b>Electrical Equipment</b>	CSR
<b>Overload</b>	MST16AHW
Time Check	2.8s - 5.2s / 32.5 A
Open Temp	135° C
Close Temp	61° C
Optional	T0653
<b>Start Capacitor</b>	88 µF / 330 V
<b>Run Capacitor</b>	15 µF / 400 V
<b>Potential Relay</b>	RVA3AN**
Pick Up	260/289V
Drop Out	50/110V
<b>Refrigerating connection for</b>	
Suction Tube	15.9 (5/8")
Discharge Tube	7.9 (5/16")
Process Tube	6.35 (1/4")

\* EN12900\_HP : T°Cond. 50.0°C / T°Evap. 5.0°C / T°Return gas temp.. 20.0°C  
T°Subcooling. 0.0K

Certificates :



Note : Tecumseh reserves the right to change information contained in this document without notification.



**Tecumseh**

<b>AJ4513P-FZ</b>	<b>Tension FZ : 220 - 240V 1~ 50 Hz</b>
-------------------	---

Les performances sont données dans les **conditions EN12900\_HP** :  
 Condition Mid  
 The performance data are in **EN12900\_HP conditions** :  
 Mid Condition

Gaz aspirés : 20.0 °C  
 Sous refroidissement : 0.0 K  
 Return gas : 20.0 °C  
 Subcooling : 0.0 K

<b>50 Hz R452A</b>											
											<b>N°3650</b>
4   T condensation	5   T évaporation	(°C)	<b>-25</b>	<b>-20</b>	<b>-15</b>	<b>-10</b>	<b>-5</b>	<b>0</b>	<b>5</b>	<b>10</b>	<b>15</b>
<b>30</b>	1   P frigorifique	(Watt)	1132	1510	1962	2496	3122	3847	4680	5629	6703
	2   P absorbée	(W)	642	725	801	870	934	993	1048	1099	1147
	3   I absorbée	(A)	3.52	3.82	4.11	4.38	4.64	4.88	5.11	5.32	5.52
<b>40</b>	1   P frigorifique	(Watt)		1192	1580	2033	2559	3166	3862	4656	5557
	2   P absorbée	(W)		751	852	945	1031	1112	1186	1256	1322
	3   I absorbée	(A)		3.89	4.31	4.71	5.10	5.47	5.83	6.17	6.50
<b>50</b>	1   P frigorifique	(Watt)			1200	1576	2006	2499	3064	3709	4442
	2   P absorbée	(W)			876	1000	1115	1224	1325	1421	1511
	3   I absorbée	(A)			4.40	4.93	5.45	5.96	6.45	6.93	7.39
<b>60</b>	1   P frigorifique	(Watt)				1116	1456	1841	2280	2780	3351
	2   P absorbée	(W)				1014	1166	1309	1444	1572	1693
	3   I absorbée	(A)				5.05	5.70	6.34	6.96	7.57	8.17

<b>50 Hz R404A</b>											
											<b>N°3648</b>
4   T condensation	5   T évaporation	(°C)	<b>-25</b>	<b>-20</b>	<b>-15</b>	<b>-10</b>	<b>-5</b>	<b>0</b>	<b>5</b>	<b>10</b>	<b>15</b>
<b>30</b>	1   P frigorifique	(Watt)	1179	1551	1995	2518	3128	3831	4636	5550	6581
	2   P absorbée	(W)	658	739	813	880	941	997	1047	1093	1135
	3   I absorbée	(A)	3.66	3.94	4.21	4.46	4.69	4.90	5.09	5.27	5.42
<b>40</b>	1   P frigorifique	(Watt)	905	1235	1617	2061	2572	3159	3828	4588	5447
	2   P absorbée	(W)	665	772	869	959	1041	1117	1186	1249	1307
	3   I absorbée	(A)	3.62	4.03	4.43	4.80	5.16	5.51	5.83	6.14	6.42
<b>50</b>	1   P frigorifique	(Watt)		912	1237	1604	2021	2494	3032	3642	4331
	2   P absorbée	(W)		775	903	1023	1133	1235	1330	1418	1499
	3   I absorbée	(A)		4.03	4.56	5.06	5.55	6.03	6.48	6.92	7.34
<b>60</b>	1   P frigorifique	(Watt)			847	1142	1467	1831	2241	2704	3228
	2   P absorbée	(W)			895	1050	1196	1332	1459	1578	1689
	3   I absorbée	(A)			4.60	5.23	5.85	6.46	7.04	7.61	8.16

1 = cooling capacity 2 = power input 3 = current 4 = condensing temperature 5 = evaporating temperature

**Nota : Tecumseh se réserve le droit de modifier les informations contenues dans ce document sans préavis.**

**Note : Tecumseh reserves the right to change information contained in this document without notification.**

© 2023 Tecumseh Products Company  
All rights reserved



**Tecumseh**

<b>AJ4513P-FZ</b>	<b>Tension FZ : 220 - 240V 1~ 50 Hz</b>
-------------------	---

Les performances sont données dans les <b>conditions EN12900_HP</b> :	Gaz aspirés :	20.0 °C
Condition Mid	Sous refroidissement :	0.0 K
The performance data are in <b>EN12900_HP conditions</b> :	Return gas :	20.0 °C
Mid Condition	Subcooling :	0.0 K

© 2023 Tecumseh Products Company  
All rights reserved

### 50 Hz R448A (\*)

**N°3651**

4   T condensation	5   T évaporation	(°C)	-25	-20	-15	-10	-5	0	5	10	15
<b>30</b>	1   P frigorifique	(Watt)	1047	1423	1873	2409	3038	3772	4618	5587	6688
	2   P absorbée	(W)	614	690	762	829	891	948	1001	1048	1091
	3   I absorbée	(A)	3.33	3.62	3.90	4.16	4.42	4.66	4.88	5.08	5.26
<b>40</b>	1   P frigorifique	(Watt)		1130	1521	1981	2518	3144	3866	4695	5639
	2   P absorbée	(W)		722	816	905	989	1066	1138	1204	1264
	3   I absorbée	(A)		3.72	4.12	4.50	4.88	5.24	5.59	5.92	6.22
<b>50</b>	1   P frigorifique	(Watt)			1175	1564	2016	2540	3144	3838	4632
	2   P absorbée	(W)			847	966	1079	1185	1285	1377	1463
	3   I absorbée	(A)			4.24	4.76	5.27	5.77	6.25	6.71	7.15
<b>60</b>	1   P frigorifique	(Watt)				1157	1529	1957	2449	3016	3666
	2   P absorbée	(W)				987	1138	1281	1416	1544	1664
	3   I absorbée	(A)				4.90	5.56	6.20	6.82	7.43	8.02

### 50 Hz R449A (\*)

**N°3649**

4   T condensation	5   T évaporation	(°C)	-25	-20	-15	-10	-5	0	5	10	15
<b>30</b>	1   P frigorifique	(Watt)	1045	1420	1870	2405	3034	3767	4613	5582	6683
	2   P absorbée	(W)	613	689	761	828	890	947	1000	1048	1091
	3   I absorbée	(A)	3.33	3.62	3.89	4.16	4.42	4.66	4.88	5.08	5.26
<b>40</b>	1   P frigorifique	(Watt)		1127	1518	1977	2514	3139	3861	4689	5633
	2   P absorbée	(W)		721	816	905	988	1066	1138	1204	1264
	3   I absorbée	(A)		3.72	4.11	4.50	4.88	5.24	5.59	5.92	6.22
<b>50</b>	1   P frigorifique	(Watt)			1171	1561	2012	2535	3138	3832	4626
	2   P absorbée	(W)			846	965	1078	1185	1284	1377	1463
	3   I absorbée	(A)			4.24	4.76	5.27	5.76	6.25	6.71	7.15
<b>60</b>	1   P frigorifique	(Watt)				1153	1525	1951	2443	3009	3659
	2   P absorbée	(W)				986	1137	1280	1416	1543	1664
	3   I absorbée	(A)				4.90	5.55	6.19	6.82	7.43	8.03

1 = cooling capacity 2 = power input 3 = current 4 = condensing temperature 5 = evaporating temperature

(\*) Veuillez vous référer strictement aux Recommandations d'Utilisation et Bulletins Marketing Tecumseh du fait de la température de reflux élevée pour les applications LBP.

(\*) Due to very high discharge temperature especially on LBP conditions, please strictly refer to Tecumseh Guidelines & Marketing Bulletin when using this refrigerant.

**Nota : Tecumseh se réserve le droit de modifier les informations contenues dans ce document sans préavis.**

**Note : Tecumseh reserves the right to change information contained in this document without notification.**





Tecumseh

<b>AJ4513P-FZ</b>	<b>Tension FZ : 220 - 240V 1~ 50 Hz</b>
-------------------	---

Les performances sont données dans les **conditions EN12900\_HP** :  
Condition Mid  
Gaz aspirés : 20.0 °C  
Sous refroidissement : 0.0 K

The performance data are in **EN12900\_HP conditions** :  
Mid Condition  
Return gas : 20.0 °C  
Subcooling : 0.0 K

<b>50 Hz R455A</b>											
 <b>N°3278</b>											
4   T condensation	5   T évaporation	(°C)	-25	-20	-15	-10	-5	0	5	10	15
<b>30</b>	1   P frigorifique	(Watt)	1067	1441	1890	2425	3060	3806	4676	5681	6833
	2   P absorbée	(W)	637	713	780	840	890	932	963	983	993
	3   I absorbée	(A)	3.24	3.55	3.84	4.11	4.35	4.54	4.68	4.75	4.74
<b>40</b>	1   P frigorifique	(Watt)		1131	1513	1966	2501	3132	3871	4729	5717
	2   P absorbée	(W)		735	828	914	993	1064	1126	1180	1223
	3   I absorbée	(A)		3.67	4.07	4.45	4.81	5.14	5.41	5.63	5.79
<b>50</b>	1   P frigorifique	(Watt)			1153	1526	1965	2484	3094	3807	4636
	2   P absorbée	(W)			849	962	1070	1171	1265	1351	1430
	3   I absorbée	(A)			4.16	4.67	5.17	5.64	6.08	6.46	6.79
<b>60</b>	1   P frigorifique	(Watt)				1119	1465	1874	2359	2932	3604
	2   P absorbée	(W)				986	1123	1254	1380	1500	1613
	3   I absorbée	(A)				4.74	5.39	6.02	6.62	7.19	7.71

<b>50 Hz R454C</b>											
 <b>N°3279</b>											
4   T condensation	5   T évaporation	(°C)	-25	-20	-15	-10	-5	0	5	10	15
<b>30</b>	1   P frigorifique	(Watt)	871	1204	1607	2090	2663	3336	4120	5024	6058
	2   P absorbée	(W)	577	648	711	765	810	846	871	887	892
	3   I absorbée	(A)	3.03	3.32	3.58	3.81	4.01	4.17	4.31	4.41	4.47
<b>40</b>	1   P frigorifique	(Watt)		943	1287	1697	2183	2755	3425	4200	5091
	2   P absorbée	(W)		670	756	835	906	968	1022	1067	1102
	3   I absorbée	(A)		3.40	3.78	4.13	4.45	4.73	4.99	5.21	5.40
<b>50</b>	1   P frigorifique	(Watt)			980	1317	1717	2189	2743	3391	4140
	2   P absorbée	(W)			778	881	977	1067	1149	1223	1289
	3   I absorbée	(A)			3.88	4.35	4.78	5.19	5.56	5.90	6.21
<b>60</b>	1   P frigorifique	(Watt)				967	1280	1652	2093	2613	3221
	2   P absorbée	(W)				907	1030	1146	1256	1360	1456
	3   I absorbée	(A)				4.46	5.02	5.54	6.03	6.49	6.92

1 = cooling capacity 2 = power input 3 = current 4 = condensing temperature 5 = evaporating temperature

**Nota : Tecumseh se réserve le droit de modifier les informations contenues dans ce document sans préavis.**  
**Note : Tecumseh reserves the right to change information contained in this document without notification.**

© 2023 Tecumseh Products Company  
All rights reserved