

## SCHEDA TECNICA / TECHNICAL DATA SHEET 2024

### MODELLO - MODEL

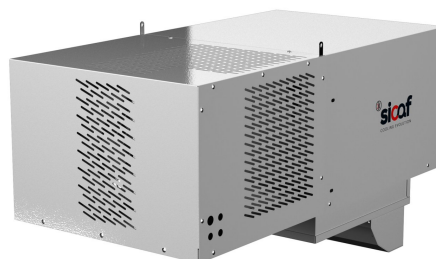
Codice - Code	Modello - Model	Type	Applicazione - Application
-	ECR058	CM EC	TN - NT

Monoblocco a Soffitto, Centralina elettronica di controllo, Tipo di espansione mediante tubo capillare, Cavo resistenza porta (sui modelli in bassa temperatura), Cavo luce cella, Pressostato di minima a taratura fissa., Pressostato di massima su tutti i modelli (direttiva 97-23-CE attrezzature in pressione), Scarico acqua di condensa interno, Compressore ermetico, Sbrinamento a gas caldo, Filtro sulla linea di liquido, Pannello di controllo remoto collegato alla unità con cavo lunghezza 5m, Predisposizione per collegamento microporta.

Ceiling mounting Monoblock, Electronic control unit, Type of expansion by capillary, Door heating cable (on low temperature models), Room light cable, Minimum pressure switch with fixed setting, Maximum pressure switch on all three-phase models and on models single-phase CMM122- 152 (in compliance with directive 97-23-CE equipment under pressure), Discharge of condensate water to lose, Hermetic compressor, Hot gas defrost, Filter on the liquid line, Remote control panel connected to the unit with a 5m cable, Predisposition for door switch connection.

### DATI TECNICI - TECHNICAL DATA

Gas - Refrigerating Gas	R290
Tensione - Voltage	230/1/50
Tipo Compressore - Compressor Type	E
Cilindrata - Displacement	2,5
Potenza Assorbita Max (W) Power Absorption Max (W)	920
Tipo Sbrinamento - Defrost Type	GC
Ventole Condensatore (mm) Condenser fans (mm)	1x254
Portata aria condensatore (mc/h) Condenser air flow (mc/h)	1050
Ventole Evaporatore Nr x D (mm) Fans Evaporator Nr x D (mm)	1X200
Portata aria evaporatore (mc/h) Evaporator air flow (mc/h)	500
Freccia Aria (mt) - Air Arrow (mt)	m. 4
Marca - Brande	Sicaf



### RESE - POWER RATE

T EXT	T C	P watt	V60 mm	V80 mm	V100 mm
<b>25</b>	5	1403	17.1	19.4	20.4
	0	1199	11.4	13.4	14.5
	-5	1017	6.8	7.8	8.8
<b>32</b>	5	1262	10.6	11.9	13.5
	0	1080	7.1	8.5	9.2
	-5	916	4.4	5.3	5.8
<b>40</b>	5	1122	6.2	7	7.6
	0	963	4.3	4.9	5.8
	-5	819	2.5	2.9	3.6

Nota/Note: Rif. EN12900 - SSH 20°C - SUB 0°K

Condizioni di Calcolo / Operating Conditions # Prodotto - Product : Carne / Meat # Stock 250 kg/mc # 10% Mov.

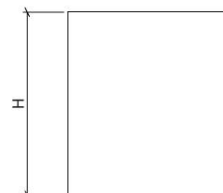
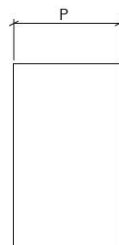
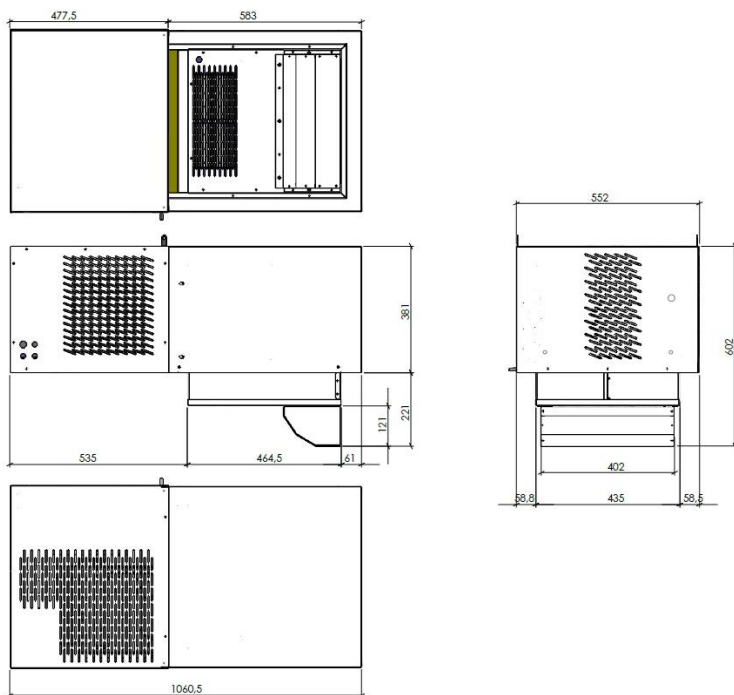
Temperatura Ingresso /Product Inlet Temperature: 10/15 °C #Tempo Funzionamento /Process time: 16 ore

## SCHEDA TECNICA / TECHNICAL DATA SHEET 2024

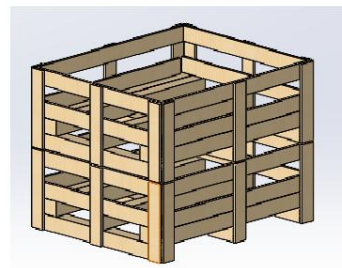
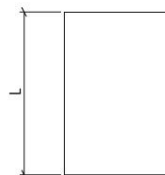
### MODELLO - MODEL

Codice - Code	Modello - Model	Type	Applicazione - Application
-	ECR058	CM EC	TN - NT

### DIMENSIONI - DIMENSIONS



Type	1
L (mm)	552
P (mm)	1060.5
H (mm)	381(602)
Peso (kg) - Weight (kg)	46
P Imballo (mm) - P Paking (mm)	650
L Imballo (mm) - L Paking (mm)	1120
H Imballo (mm) - H Paking (mm)	650
Peso Lordo (Kg) - Gross Weight (Kg)	62



## SCHEDA TECNICA / TECHNICAL DATA SHEET 2024

### MODELLO - MODEL

Codice - Code	Modello - Model	Type	Applicazione - Application
-	ECR058	CM EC	TN - NT

### KIT E ACCESSORI - KIT AND OPTIONALS

Cod. PST CND Mod. Pressostato Ventola Condensatore - Cond Fan Pressostat - Kond. Druckregelung Druckschalter

Cod. FRS CS1 Mod. Protezione Cataforesi Condensatore -Corrosion Protection Condenser - Korrosionsschutz Kondensator

Cod. FRS ES1 Mod. Protezione Cataforesi Evaporatore - Corrosion Protection Evaporator - Korrosionsschutz Verdampfer

Cod. TLG WIFI Mod. Telegestione Wifi Epoca - Remote Control Wifi

Cod. REG CND Mod. Regolatore Vel. Ventola Condensatore - Cond. Fan Speed Control - Drehzahlregler

Cod. RES CAR Mod. Resistenza Carter - Crankcase Heater - Oelsumpfheizung