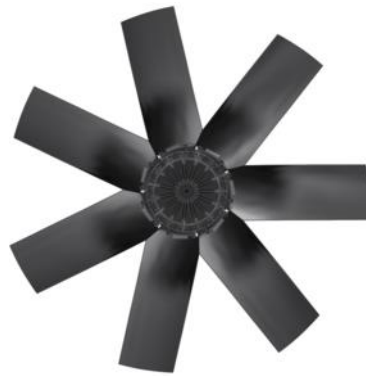


Movement by Perfection



The Royal League in ventilation, control and drive technology



[Product documentation](#)

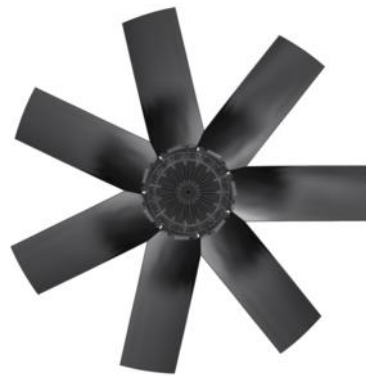
Type
[FC091-SDS.7Q.V7](#)

Article number
[209589](#)

Product documentation

Type
FC091-SDS.7Q.V7

Article number
209589



Contents

1.	Product specification - Technical data	3
2.	Characteristic Curve	4
3.	Drawing	5
4.	Connection diagram	6

1. Product specification - Technical data

Article number	209589
Type	FC091-SDS.7Q.V7
Designation	Axial fan with diecast blades
Rated values	3~400V $\pm 10\%$ D/Y 50Hz P ₁ 3.60/2.50kW 7.2/4.3A $\Delta I = 5\%$ 890/700/min COSY 0,72 60°C test
Electrical connection	Terminal box K07
ErP Data	Measurement category ErP: A Air flow q _v on Eta opt: 25531 m ³ /h Pressure increase p _{fs} on Eta opt: 193 Pa Input power P ₁ on Eta opt: 3600 W Efficiency η_{statA} : 38.3 % Efficiency grade: N _{actual} = 41.2 / N _{target} = 40* *ErP 2015
Type of protection	IP54
Thermal class	THCL155
Mounting type terminal box	Mounted on Stator
Connection diagram	1360-108XA
Rating plate	1x fixed
Fitting position	H/Vu/Vo
Motor protection	thermal contact
Impregnation	Moisture and hot climate protection
Condensation	Condensation water holes in stator/rotor open
Quality of bearings	ball bearing with long-time lubrication
Material Rotor	Aluminium
Painting rotor	Rotor 1 coat paint resistance class 1 (L-TI-0596)
colour rotor	RAL 9005 (jet black)
painting stator	Stator 1 coat paint resistance class 1 (L-TI-0596)
colour stator	RAL 9005 (jet black)
Material blades	Aluminium
Painting impeller	Impeller 1 coat paint resistance class 1 (L-TI-0596)
Colour blades	RAL 9005 (jet black)
Painting mot.suspens	Motor suspension 1 coat paint resistance class 1 (L-TI-0596)
colour suspension	RAL 9005 (jet black)
Weight	53.05 kg

*** Operation mode:

Continuous operation with occasional starts (S1) according to DIN EN 60034-1:2011-02.

Occasional starting between -40 °C and -25 °C is permissible. Continuous operation below -25 °C only with special bearings for refrigeration applications on request.

Permissible minimum and maximum ambient temperature for operation:

Please refer to the technical documentation of the product for the minimum and maximum ambient temperature valid for the respective fan. Operation below -25 °C as well as partial load operation for refrigeration applications is only possible with special bearings for refrigeration applications on request. If special bearings for refrigeration applications are installed in the fan, please observe the permissible maximum temperatures in the technical documentation of the product.

2. Characteristic Curve

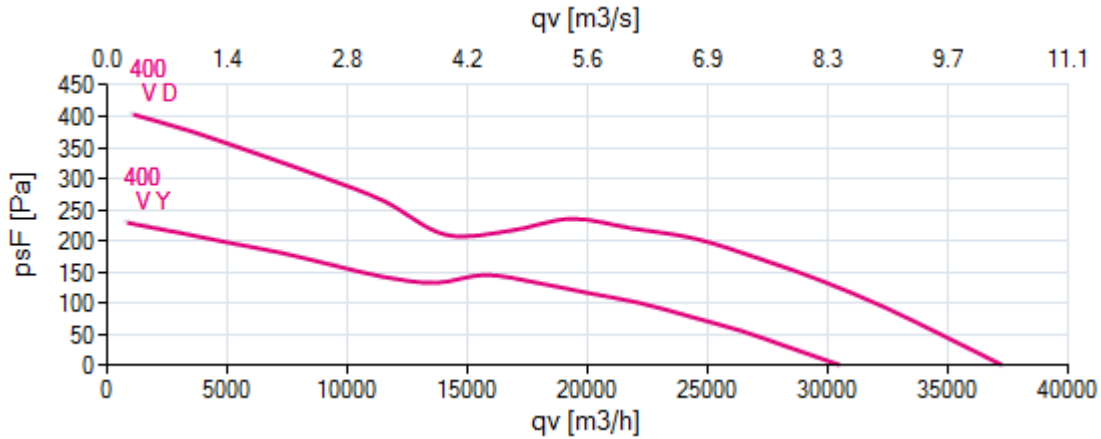
FC091-SDS.7Q.V7

Measured in full nozzle without guard grille in air flow direction V in installation type A according to ISO5801

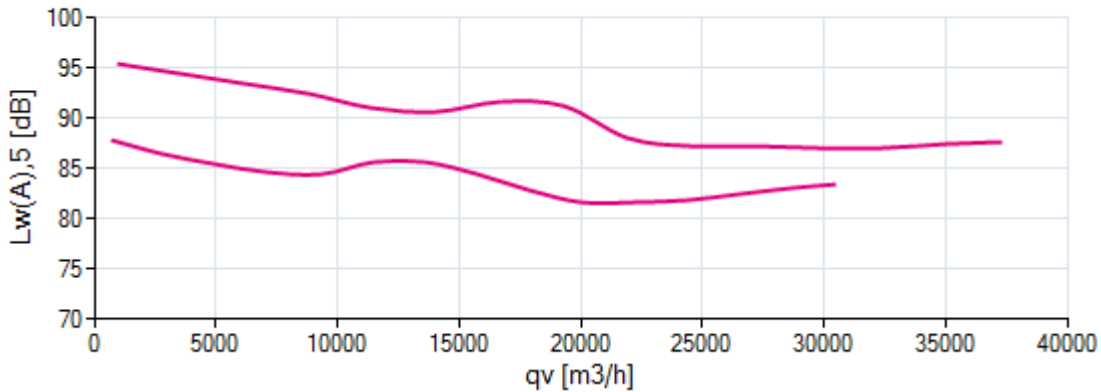
3~ 400V 50Hz D

Densidades de medida 1,16 kg/m³

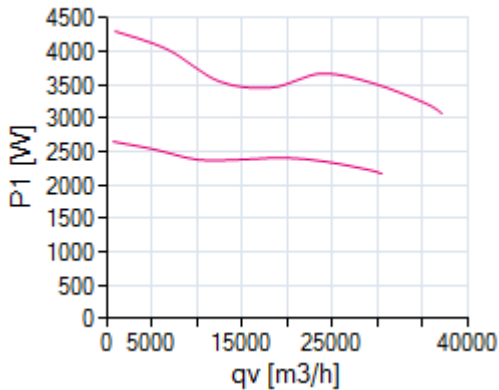
Air performance



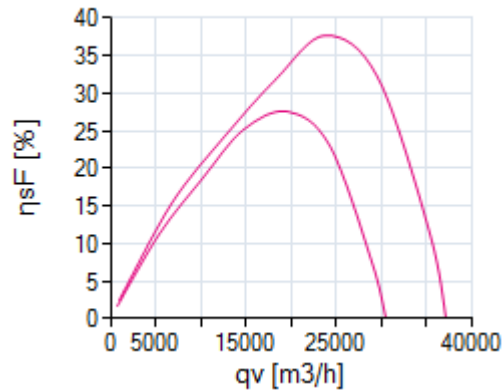
Acoustics



Power input



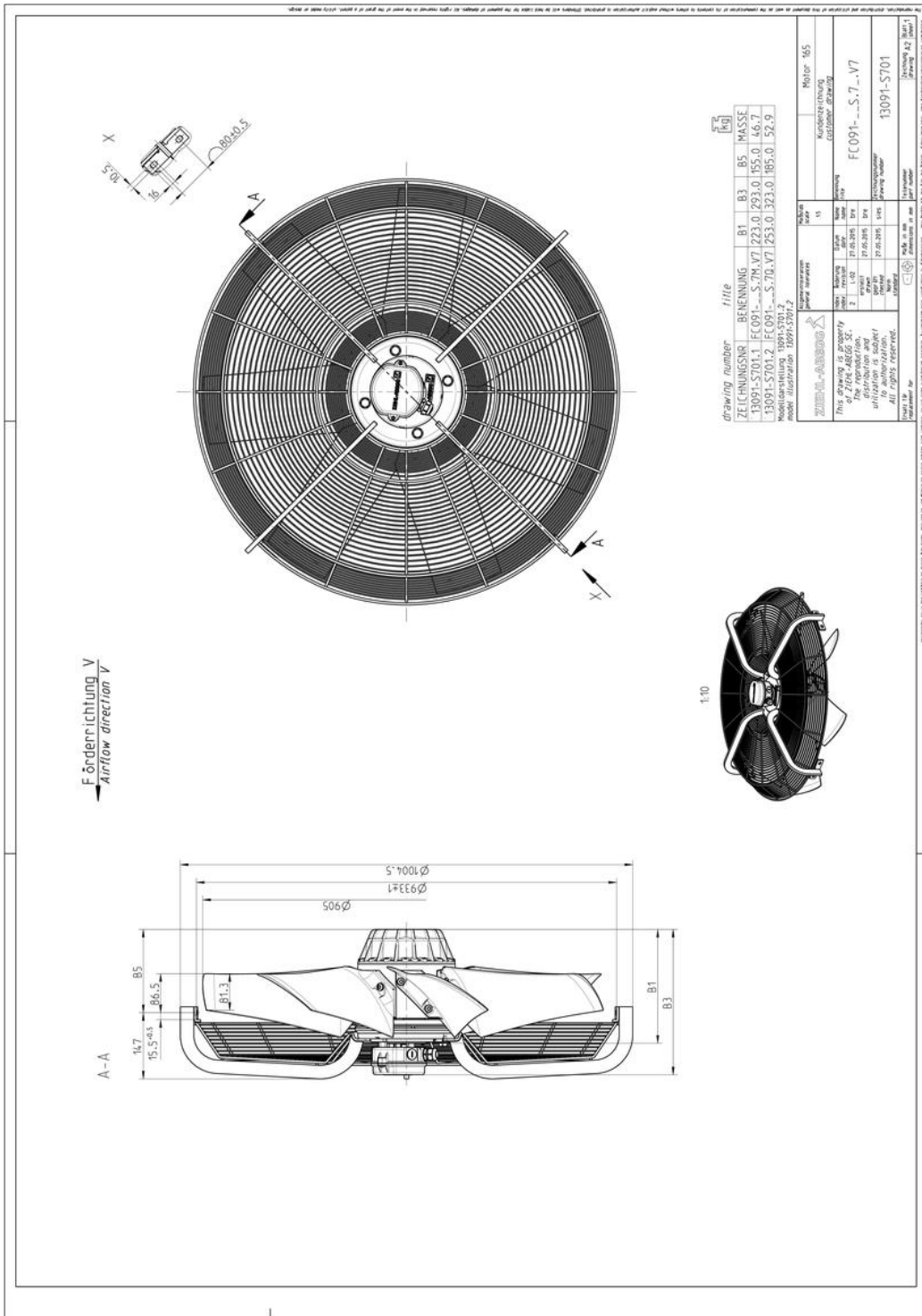
Efficiency



Please note: It's not allowed to use this fan in the stall area!*

*In doubt please ask your responsible ZIEHL-ABEGG sales contact.

3. Drawing



Dimensions in mm

The illustrations shown make no claim to completeness and are for orientation purposes only.

4. Connection diagram

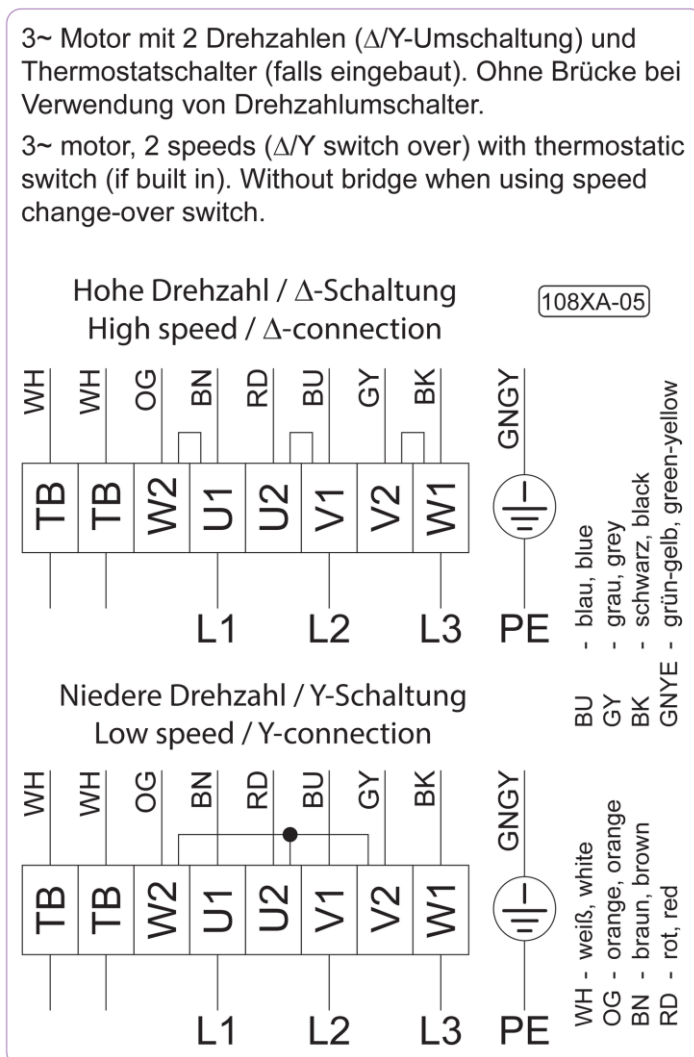
wiring diagram: 1360-108XA

3~ motor, 2 speeds (Δ /Y switch over) with thermostatic switch (if built in). Without bridge when using speed change-over switch.

- BN brown
- BU blue
- BK black
- RD red
- GY grey
- OG orange
- WH white
- GNYE green-yellow

High speed/D-connection

Low speed/Y-connection





The Royal League in ventilation, control and drive technology

Intelligent control technology for any application

**ZIEHL-ABEGG system capabilities:
Everything from a single source – perfectly matched for optimal performance**

Please contact us. We would be pleased to design an individual solution for your requirements.

We would like to welcome you on our worldwide exhibitions. Please find our next exhibitions [here](#).