

COMPRESSOR

Displacement (cm ³)	4.6
Diameter (mm)	19.09
Stroke (mm)	15.94
Net Weight (Kg)	9.9
Oil type	ISO VG 46 ESTER
Oil charge (cm ³)	300

MOTOR

Approximate Power (CV)	1/6
Voltage/Frequency (V/Hz)	220V 50Hz
Voltage range (V)	187-264
Code	61.567
Type	CSIR
Phase number	1 PH
Locked rotor current (A)	8.6
Main W. resist. at 25°C (Ω)	12.24
Start W. resist. at 25°C (Ω)	34.06

APPLICATION

Application	Low back pressure
Refrigerant	R404A
Evaporating (°C)	-40 to -10
Expansion	Capillar/Valve
Comp. cooling	Fan cooled
Max. ambient temp. (°C)	43

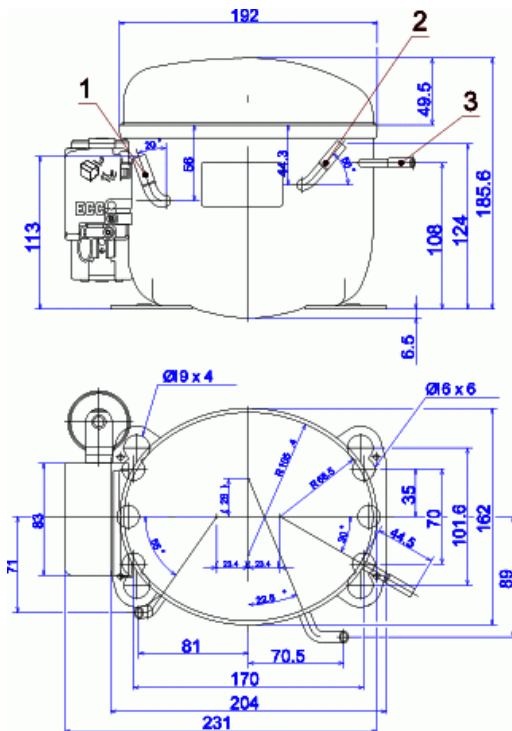
NOMINAL PERFORMANCE	CYCLE A	CYCLE B
Cooling capacity (kcal/h)	115	170
Input power (W)	202	210
EER (kcal/Wh)	0.56	0.80
COP (W/W)	0.66	0.94
Current (A)	1.37	1.39

TEST CONDITIONS

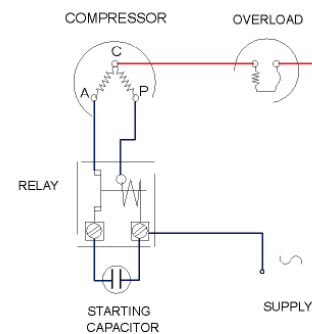
Evaporating temp. (°C)	-25.0	-23.3
Condensing temp. (°C)	55.0	55.0
Liq.t. entering expan. (°C)	55.0	32.0
Ambient t. and return (°C)	32.0	32.0
Tens/Freq (V/Hz)	220V 50Hz	220V 50Hz

ELECTRICAL COMPONENTS

Relay	2014 118.	
Pick-Up (A)	3.75	
Drop-Out (A)	3.20	
Protector	MRP61AMJ	T0073
Current (A)	6.9	6.2
Time check (seg)	7.5-14	7.5-14
Disc temp. (Open/Close) (°C)	90.0 / 57.0	110.0 / 62.0
Starting capacitor (μF/V)/FV)	47- 56 / 250	

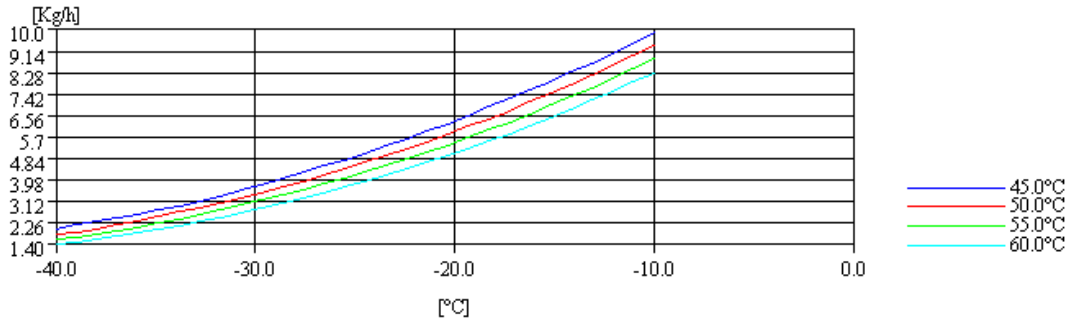
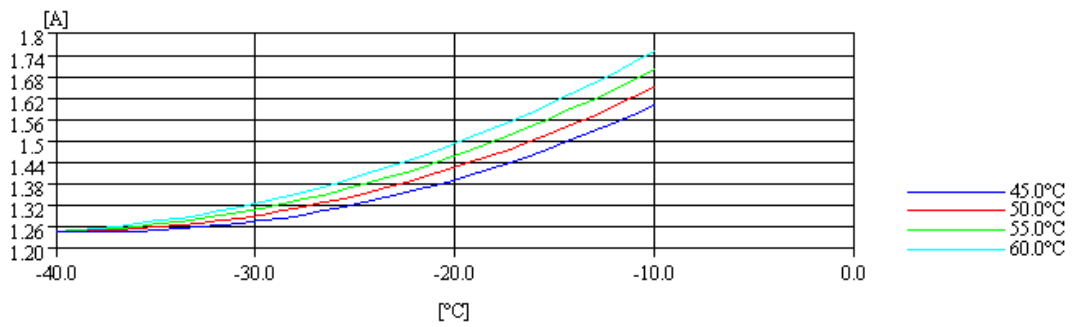
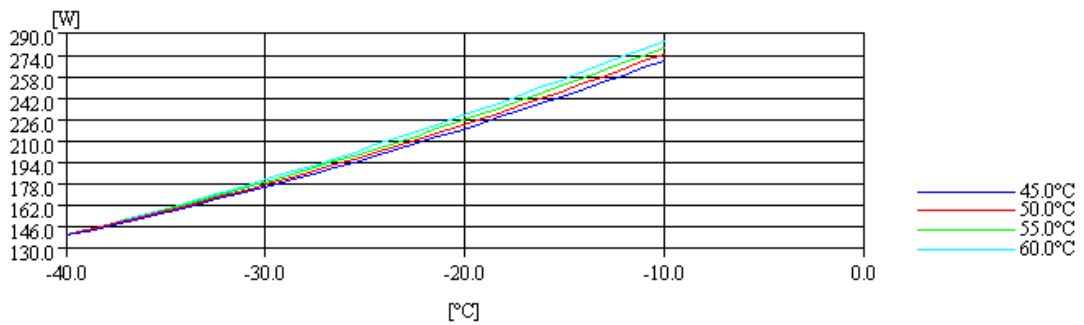
DIMENSIONS AND ELECTRICAL DIAGRAM


DESIGNATION	INTERNAL DIAM. (MM)	
1	Suction/Service	6,5
2	Service/Suction	6,5
3	Discharge	4,9

CSIR


TEST CONDITIONS

Voltage/frequency	220V 50Hz
Ambient t. and return	32 °C
Liq.t. entering expan.	Subcooling at 32 °C

MASS FLOW

INTENSITY

CONSUMPTION

COOLING CAPACITY
