

**380-420V 50 / 440-480V 60Hz 3~****GENERAL DATA****Application:** M/HBP**Refrigerant:** R404A**Evaporating Temperature Range:** -20°C to 10°C**Compressor Cooling:** Fan**Fan air flow:** 800 m<sup>3</sup>/h**Type:** Hermetic reciprocating**Technology Type:** On-Off**Expansion Device:** Capillary Tube or Expansion Valve**Packing Quantity:** Multi - 36 pcs**Displacement:** 26.1 cm<sup>3</sup>**Horse power:** 1.5 hp
**Approvals:**





**MECHANICAL DATA****Bore:** 41.77 mm**Stroke:** 19.07 mm**Oil Charge:** 750ml +/-15ml**Free Internal Volume:** 3.9 cm<sup>3</sup>**Maximum Recommended Refrigerant Charge:** 800 g**Oil Type Configuration:** Polyolester**Oil Type Viscosity:** ISO22**Compressor pressurization:** Dry air charge**Weight:** 20 kg**ELECTRICAL DATA****Motor Type:** 3PHASE**Starting Torque:** HST**Voltage working range at 50 Hz:** 332-445 V**Voltage working range at 60 Hz:** 396-509 V**Maximum Motor Temperature:** 130 °C**Run Winding Resistance:** 15.1 Ω (± 10%) at 25°C**MOUNTING ACCESSORIES**

	Description	Code
<b>Cover:</b>	yes	2075281
<b>Terminal Board:</b>	no	-
<b>Anchorage:</b>	no	-
<b>Overload Protector Bracket:</b>	no	-
<b>Capacitor Bracket:</b>	no	-
<b>Grommets:</b>	yes	2221004
<b>Sleeves:</b>	yes	2222016
<b>Washer:</b>	no	-
<b>Pin:</b>	no	-
<b>Clip:</b>	no	-
<b>Rotolock valve:</b>	no	-

**ELECTRICAL COMPONENTS**

	Component type	Description	Code
<b>Motor Protection:</b>	Internal		34HM207

**EXTERNAL CHARACTERISTICS****Base Plate:** Large**Tray Holder:** No**Height:** 276 mm

	Internal Diameter (mm)	Material	Shape
<b>Suction Connector</b>	12.77	Copper	Vertical
<b>Discharge Connector</b>	8	Copper	Slanted 65°
<b>Process Connector</b>	6.42	Copper	Vertical



**RATED POINT DATA**

Cooling Capacity (W)	Power Consumption (W)	Current Consumption (A)	Gas Flow Rate (kg/h)	Efficiency (W/W)
±5%	±5%	±5%	±5%	±7%
4 813	1 867	3.27	134.24	2.58

Test condition: ASHRAE, Fan, Return Gas 35°C, Subcooling 8.3K, Evaporating: 7.2°C, Condensing: 54°C, Ambient: 35°C

**PERFORMANCE CURVE DATA****380V 50Hz**

Condensing Temperature (°C)	Evaporating Temperature (°C)	Cooling Capacity (W)	Power Consumption (W)	Current Consumption (A)	Gas Flow Rate (kg/h)	Efficiency (W/W)
		±5%	±5%	±5%	±5%	±7%
<b>35°C</b>	10	7 243	1 561	2.84	164.67	4.64
	5	6 045	1 495	2.80	135.97	4.04
	0	4 976	1 419	2.68	110.83	3.51
	-5	4 037	1 334	2.52	89.13	3.03
	-10	3 227	1 240	2.33	70.72	2.60
	-15	2 547	1 138	2.13	55.48	2.24
	-20	1 996	1 027	1.94	43.25	1.94

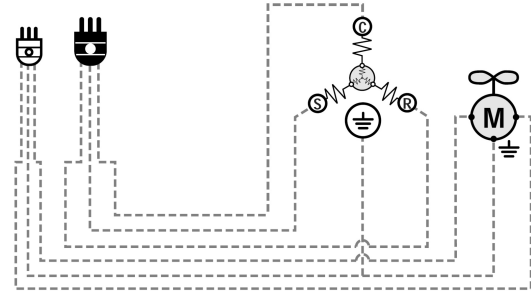
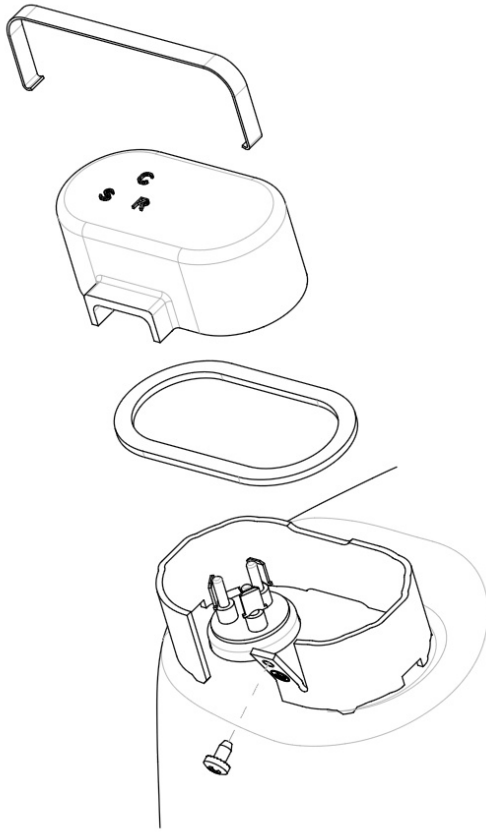
Condensing Temperature (°C)	Evaporating Temperature (°C)	Cooling Capacity (W)	Power Consumption (W)	Current Consumption (A)	Gas Flow Rate (kg/h)	Efficiency (W/W)
		±5%	±5%	±5%	±5%	±7%
<b>45°C</b>	10	6 245	1 763	3.10	157.31	3.54
	5	5 212	1 653	3.00	129.82	3.15
	0	4 288	1 539	2.84	105.68	2.79
	-5	3 471	1 422	2.64	84.75	2.44
	-10	2 762	1 302	2.41	66.88	2.12
	-15	2 160	1 178	2.19	51.95	1.83
	-20	1 666	1 051	1.98	39.82	1.58

Condensing Temperature (°C)	Evaporating Temperature (°C)	Cooling Capacity (W)	Power Consumption (W)	Current Consumption (A)	Gas Flow Rate (kg/h)	Efficiency (W/W)
		±5%	±5%	±5%	±5%	±7%
<b>55°C</b>	10	5 211	1 972	3.38	148.40	2.64
	5	4 348	1 818	3.22	122.24	2.39
	0	3 571	1 665	3.01	99.21	2.15
	-5	2 881	1 514	2.76	79.15	1.90
	-10	2 276	1 366	2.50	61.95	1.67

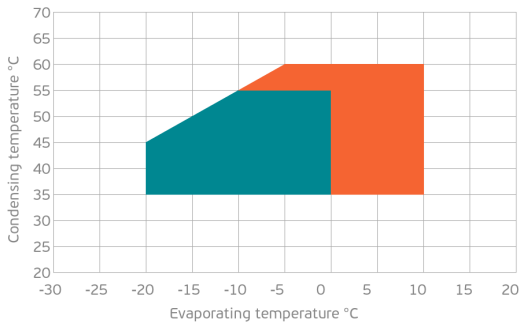
Test condition: ASHRAE, Fan, Return Gas 35°C, Subcooling 8.3K, Ambient: 35°C

**ASSEMBLY INSTRUCTION**

**WIRING DIAGRAM**



**OPERATING ENVELOPE**



- Operating Condition
- Transient Condition
- Superheating

**NOTE:** usage of compressors outside of intended working range cannot make use of the warranty, or should be consulted with Technical support.

